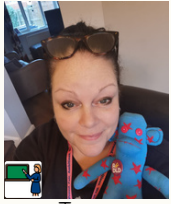


Meet the DLD team!



We are the Developmental Language Disorder (DLD) team.



Tracy



Anna



Marcella



Val



Sam



Heather



Jade



Fay



Sara

Some of us will come and visit you at school. When we do, we will have a chat with you and bring some different fun activities to do. These activities help us understand how you learn.



Tracy is a specialist speech and language teacher. This means she is a teacher with extra training to help children with speech and language.



Anna and Marcella are Speech and Language Therapists. This means they help children to communicate the best they can.



Val, Sam and Heather are Specialist Learning Support Assistants (LSA). This means they work directly with children, working together on tasks which help their speech or language skills.



Jade is an Educational Psychologist and Fay and Sara are trainee Educational Psychologists. This means they have extra training about how children develop and the school system. They might get involved if children or teachers need a little extra support.

We're looking forward to meeting you!

Who else is in the photos?



1

First, some of us will meet and talk to your teachers and grown ups to find out what is going well for you and what is tricky at school.



Let us tell you why we're here and what might happen during our time together!

1

2

Next, some of us will come and meet you to do activities. We want to find out from you how you are feeling at school and what could help to make it even better. One of us will come and observe you in class.

2

3

Using all of this information, we will make a plan about how to help you learn and feel even better. We will meet and talk to your teachers and grown ups again about what we learned.



Working with us is your choice!

3

4

If we think it will be helpful, an LSA will come to work with you a few times every week for up to 25 weeks. At the end of this work, we will meet again to think about what happens next.

4

