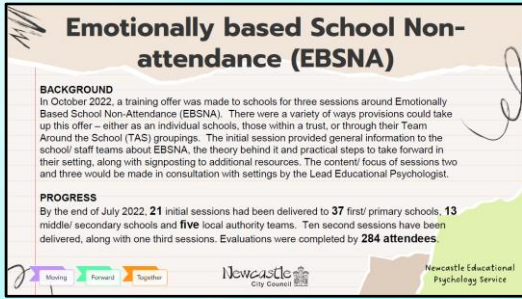


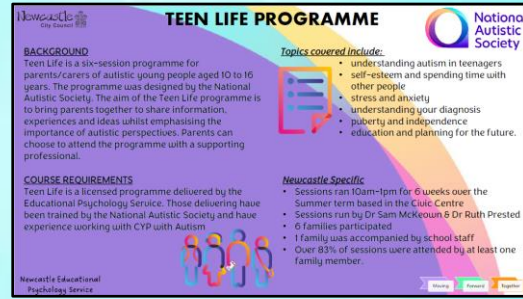
Newcastle EPS Evaluation of Practice

An evaluative summary of practice within the Educational Psychology
Service for 2022-23.



Emotionally Based School Non-attendance

Summary of the initial training that has taken place across the city.



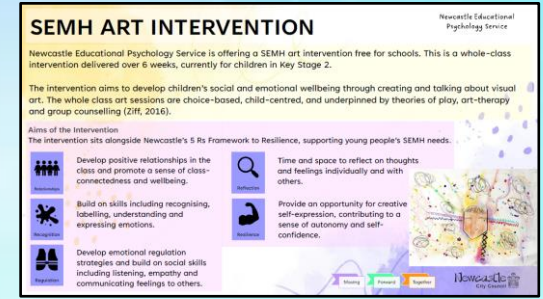
Teen Life

Background information evaluation summary about the pilot Teen Life Programme.



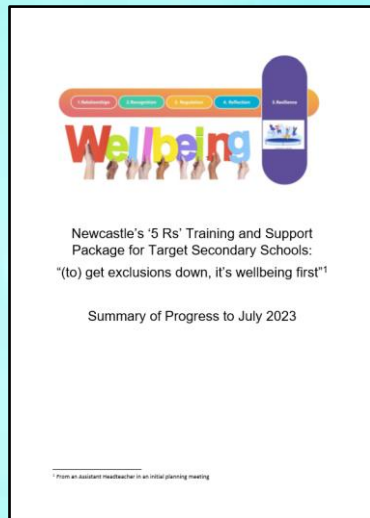
Zones of Regulation

Summary of the programme and feedback from schools who have received the initial training.

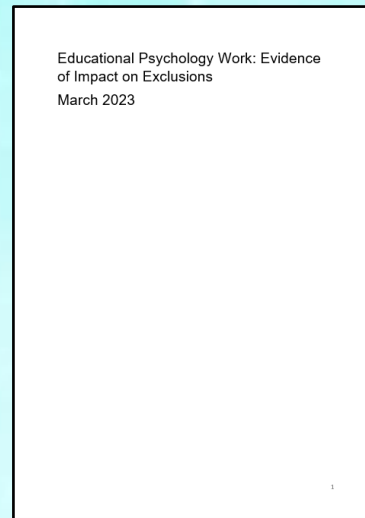


SEMH Art Intervention

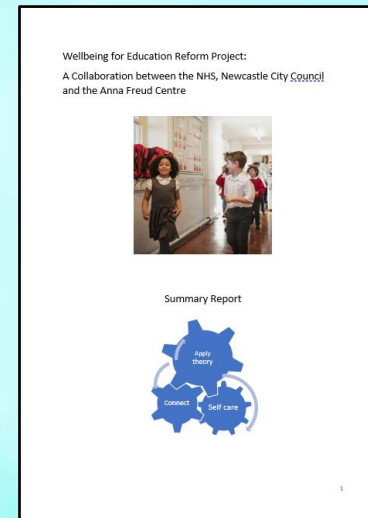
Summary of 6-week art intervention into schools and a summary evaluation from schools and pupils.



5Rs Training and Support Package
Interim review and evaluation of the 5R's programme to support targeted secondary schools.



Impact of Educational Psychology Work on Exclusions
Review of a range of work carried out by the Educational Psychology Service around exclusions.



Wellbeing For Education Reform Project
Summary review of the project conducted by Newcastle EPS, Health and the Anna Freud Centre.